

Welcome to Kilkenny Castle



Kilkenny Castle is more than 800 years old.

The Castle was built for defence by a Norman knight William Marshall.

The Butler Family lived in the Castle for over 550 years.

They were very rich and were great friends with the Kings and Queens of
England.

Today the Castle is looked after by the O.P.W and belongs to the Irish people.



The Undercroft

We are now in the basement of Kilkenny Castle. This circular room is the base of one of the 3 remaining medieval towers of the Castle. In this area, you can spot 2 interesting features of medieval castles: **arrow loops** and **wattle & daub**.

Arrow loops are vertical narrow windows used by archers to launch arrows. Wattle and daub is a mix of small branches & twigs (wattle) and wet soil, clay or straw (daub) used to make walls and buildings.

Can you spot them in this room?





The Chinese Withdrawing Room

This Chinese Withdrawing Room was like a sitting room where ladies would have tea. The room is called Chinese Withdrawing Room because of the Chinese wallpaper on the walls. The wallpaper is decorated with birds and flowers.

Can you spot these birds on the wallpaper?





The Dining Room

This is where the Butler family and their friends would have delicious dinners and wonderful feasts. Look at how the table is set up:

Can you count how many guests are expected for dinner?

How many plates are set up for each guest?

How many glasses are set up for each guest?

How many plates would that be in total on the table?

How many glasses in total does that make?





The Entrance Hall

The Entrance Hall was the first room of the Castle guests would enter. They would be welcomed by a servant before meeting with members of the Butler family. The floor of this room is made of white and black tiles. The black tiles are made of Kilkenny marble. The marble formed over 350 million years ago when Ireland was under sea. The dark stone is dotted with white speckles; these are fossilized seashells and corals and make each tile different.

Can you spot these tiles in the room?





The Tapestry Room

The family had several tapestries in the Castle. Tapestries were used to keep the Castle warm and to decorate the rooms. The tapestries you see here tell the stories of an historical character named Decius Muss. Decius was from Rome in Italy and fought against the Latin Tribes.

Can you spot the following details in the tapestries?



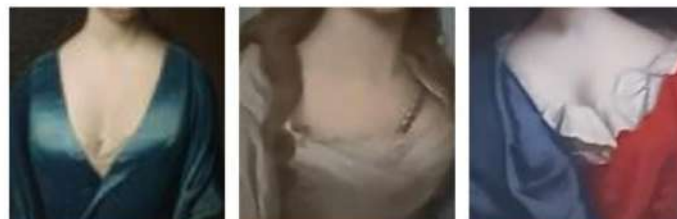


The Library

This is where the Butler family would come during the day for reading books and writing letters.



Look at the portraits in the room and match the dresses to the ladies.





The Drawing Room

The Drawing Room was just like our sitting room today: a place to relax with friends, family and pets.

Can you spot the following pet dogs in the paintings in this room?





The Moorish Staircase

This beautiful staircase was inspired by the exotic palaces of the Moors in Spain.

Can you spot these animals carved on the staircase?





The Picture Gallery

This room was built by the family to display their collection of paintings. The family had nearly 200 paintings in the room when they lived here.

Today most of the paintings are portraits of family members and friends. In some of the portraits, you will see that they are using accessories.

Can you spot the following accessories in the portraits?

**Thank you for visiting
Kilkenny Castle- we hope
you had fun!!**

